

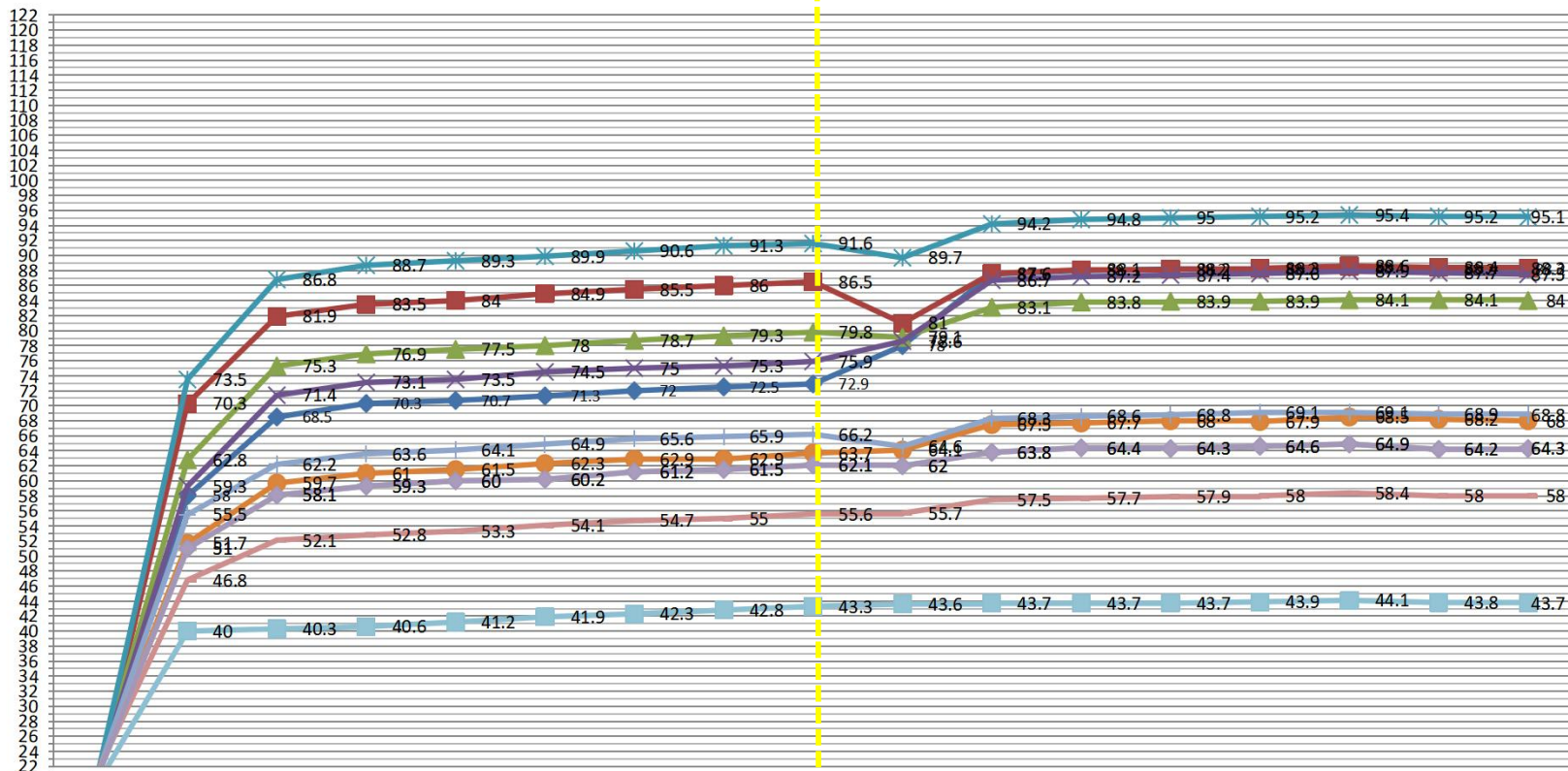
**Temperature rise testing Data for QC65-65WPD single C port 20V3.25A  
100VAC-240VAC both low voltage and high voltage test 4 hours in full load**

**Ambient Temperature: 40 °C Ambient Humidity: 30%RH**

| Record time    | Passage33<br>DB1 bridge<br>rectifier | Passage34<br>U1 IC GAN | Passage35<br>T1<br>transformer | Passage36<br>L2 inductor<br>wire | Passage37<br>U3 MOS | Passage38<br>casing<br>transformer side | Passage39<br>casing U1<br>side | Passage40<br>casing top<br>side | Passage52<br>casing right<br>side | Passage53<br>casing left<br>side | Passage 11<br>test chamber<br>temperature | Ambient<br>temperature<br>°C | Humidity<br>RH % |
|----------------|--------------------------------------|------------------------|--------------------------------|----------------------------------|---------------------|---|--------------------------------|---------------------------------|-----------------------------------|----------------------------------|---|------------------------------|------------------|
| 2025/1/4 9:49  | 21.2                                 | 20.9                   | 21.1                           | 20.9                             | 21.2                | 21.1                                    | 21.2                           | 21.4                            | 20.8                              | 20.8                             | 19.8                                      | 40                           | 30               |
| 2025/1/4 10:19 | 58                                   | 70.3                   | 62.8                           | 59.3                             | 73.5                | 51.7                                    | 55.5                           | 46.8                            | 51                                | 51                               | 40  | 40                           | 30               |
| 2025/1/4 10:49 | 68.5                                 | 81.9                   | 75.3                           | 71.4                             | 86.8                | 59.7                                    | 62.2                           | 52.1                            | 58.1                              | 58.1                             | 40.3                                      | 40                           | 30               |
| 2025/1/4 11:19 | 70.3                                 | 83.5                   | 76.9                           | 73.1                             | 88.7                | 61                                      | 63.6                           | 52.8                            | 59.3                              | 59.3                             | 40.6                                      | 40                           | 30               |
| 2025/1/4 11:49 | 70.7                                 | 84                     | 77.5                           | 73.5                             | 89.3                | 61.5                                    | 64.1                           | 53.3                            | 60                                | 60                               | 41.2                                      | 40                           | 30               |
| 2025/1/4 12:19 | 71.3                                 | 84.9                   | 78                             | 74.5                             | 89.9                | 62.3                                    | 64.9                           | 54.1                            | 60.2                              | 60.2                             | 41.9                                      | 40                           | 30               |
| 2025/1/4 12:49 | 72                                   | 85.5                   | 78.7                           | 75                               | 90.6                | 62.9                                    | 65.6                           | 54.7                            | 61.2                              | 61.2                             | 42.3                                      | 40                           | 30               |
| 2025/1/4 13:19 | 72.5                                 | 86                     | 79.3                           | 75.3                             | 91.3                | 62.9                                    | 65.9                           | 55                              | 61.5                              | 61.5                             | 42.8                                      | 40                           | 30               |
| 2025/1/4 13:49 | 72.9                                 | 86.5                   | 79.8                           | 75.9                             | 91.6                | 63.7                                    | 66.2                           | 55.6                            | 62.1                              | 62.1                             | 43.3                                      | 40                           | 30               |
| 2025/1/4 14:19 | 78                                   | 81                     | 79.1                           | 78.6                             | 89.7                | 64.1                                    | 64.6                           | 55.7                            | 62                                | 62                               | 43.6                                      | 40                           | 30               |
| 2025/1/4 14:49 | 87.5                                 | 87.6                   | 83.1                           | 86.7                             | 94.2                | 67.5                                    | 68.3                           | 57.5                            | 63.8                              | 63.8                             | 43.7                                      | 40                           | 30               |
| 2025/1/4 15:19 | 88                                   | 88.1                   | 83.8                           | 87.2                             | 94.8                | 67.7                                    | 68.6                           | 57.7                            | 64.4                              | 64.4                             | 43.7                                      | 40                           | 30               |
| 2025/1/4 15:49 | 88.2                                 | 88.2                   | 83.9                           | 87.4                             | 95                  | 68                                      | 68.8                           | 57.9                            | 64.3                              | 64.3                             | 43.7                                      | 40                           | 30               |
| 2025/1/4 16:19 | 88.2                                 | 88.3                   | 83.9                           | 87.6                             | 95.2                | 67.9                                    | 69.1                           | 58                              | 64.6                              | 64.6                             | 43.9                                      | 40                           | 30               |
| 2025/1/4 16:49 | 88.4                                 | 88.6                   | 84.1                           | 87.9                             | 95.4                | 68.5                                    | 69.1                           | 58.4                            | 64.9                              | 64.9                             | 44.1                                      | 40                           | 30               |
| 2025/1/4 17:19 | 88.2                                 | 88.4                   | 84.1                           | 87.7                             | 95.2                | 68.2                                    | 68.9                           | 58                              | 64.2                              | 64.2                             | 43.8                                      | 40                           | 30               |
| 2025/1/4 17:49 | 88.2                                 | 88.3                   | 84                             | 87.5                             | 95.1                | 68                                      | 68.8                           | 58                              | 64.3                              | 64.3                             | 43.7                                      | 40                           | 30               |

### Temperature rise testing Data for QC65-65WPD single C port 20V3.25A

(9:49:00~13:49:00) ↓: 240VAC change ↓ voltage (13:49:00~17:49:00) ↓: 100VAC



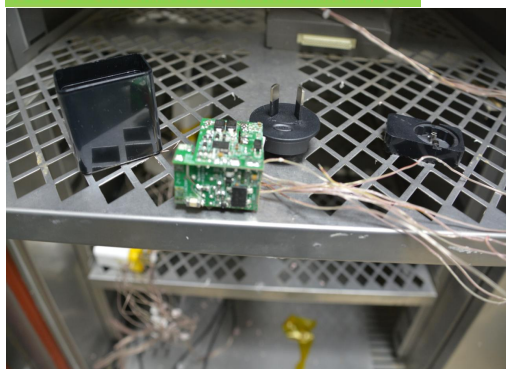
|                                       | Record time | 2025/1/4 9:49 | 2025/1/4 10:19 | 2025/1/4 10:49 | 2025/1/4 11:19 | 2025/1/4 11:49 | 2025/1/4 12:19 | 2025/1/4 12:49 | 2025/1/4 13:19 | 2025/1/4 13:49 | 2025/1/4 14:19 | 2025/1/4 14:49 | 2025/1/4 15:19 | 2025/1/4 15:49 | 2025/1/4 16:19 | 2025/1/4 16:49 | 2025/1/4 17:19 |
|---------------------------------------|-------------|---------------|----------------|----------------|----------------|----------------|----------------|----------------|----------------|----------------|----------------|----------------|----------------|----------------|----------------|----------------|----------------|
| ◆ Passage33 DB1 bridge rectifier      | 21.2        | 58            | 68.5           | 70.3           | 70.7           | 71.3           | 72             | 72.5           | 72.9           | 78             | 87.5           | 88             | 88.2           | 88.2           | 88.4           | 88.2           | 88.2           |
| ■ Passage34 U1 IC GAN                 | 20.9        | 70.3          | 81.9           | 83.5           | 84             | 84.9           | 85.5           | 86             | 86.5           | 81             | 87.6           | 88.1           | 88.2           | 88.3           | 88.6           | 88.4           | 88.3           |
| ▲ Passage35 T1 transformer            | 21.1        | 62.8          | 75.3           | 76.9           | 77.5           | 78             | 78.7           | 79.3           | 79.8           | 79.1           | 83.1           | 83.8           | 83.9           | 83.9           | 84.1           | 84.1           | 84             |
| ✕ Passage36 L2 inductor wire          | 20.9        | 59.3          | 71.4           | 73.1           | 73.5           | 74.5           | 75             | 75.3           | 75.9           | 78.6           | 86.7           | 87.2           | 87.4           | 87.6           | 87.9           | 87.7           | 87.5           |
| ✱ Passage37 U3 MOS                    | 21.2        | 73.5          | 86.8           | 88.7           | 89.3           | 89.9           | 90.6           | 91.3           | 91.6           | 89.7           | 94.2           | 94.8           | 95             | 95.2           | 95.4           | 95.2           | 95.1           |
| ● Passage38 casing transformer side   | 21.1        | 51.7          | 59.7           | 61             | 61.5           | 62.3           | 62.9           | 62.9           | 63.7           | 64.1           | 67.5           | 67.7           | 68             | 67.9           | 68.5           | 68.2           | 68             |
| ◆ Passage39 casing U1 side            | 21.2        | 55.5          | 62.2           | 63.6           | 64.1           | 64.9           | 65.6           | 65.9           | 66.2           | 64.6           | 68.3           | 68.6           | 68.8           | 69.1           | 69.1           | 68.9           | 68.8           |
| — Passage40 casing top side           | 21.4        | 46.8          | 52.1           | 52.8           | 53.3           | 54.1           | 54.7           | 55             | 55.6           | 55.7           | 57.5           | 57.7           | 57.9           | 58             | 58.4           | 58             | 58             |
| — Passage52 casing right side         | 20.8        | 51            | 58.1           | 59.3           | 60             | 60.2           | 61.2           | 61.5           | 62.1           | 62             | 63.8           | 64.4           | 64.3           | 64.6           | 64.9           | 64.2           | 64.3           |
| — Passage53 casing left side          | 20.8        | 51            | 58.1           | 59.3           | 60             | 60.2           | 61.2           | 61.5           | 62.1           | 62             | 63.8           | 64.4           | 64.3           | 64.6           | 64.9           | 64.2           | 64.3           |
| ■ Passage 11 test chamber temperature | 19.8        | 40            | 40.3           | 40.6           | 41.2           | 41.9           | 42.3           | 42.8           | 43.3           | 43.6           | 43.7           | 43.7           | 43.7           | 43.9           | 44.1           | 43.8           | 43.7           |

# Temperature rise testing equipment and pictures

1 OF 7: Before testing



2 OF 7: Stick the temperature sensing glue



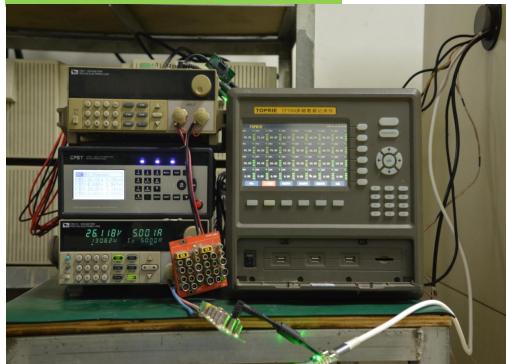
3 OF 7: Add thermal glue



4 OF 7: Load working in 100VAC



5 OF 7:2 load working in 240VAC



6 OF 7: Working in the testing equipment



7 OF 7: Full view of the testing

